

Description and Use

TecLoc Fascia System

The TecLoc Fascia System is an economical snap-on fascia system designed for use with single ply, built-up and modified bitumen roofing systems. The fascia system consists of a galvanized base piece (Water Dam) and a Kynar® 500 coated cover piece of either galvanized or aluminum (Fascia Cover). Concealed cover plates complete the system.

Water Dam

10' (3.05 m) sections of 22 gauge (0.61 mm) galvanized are installed over the membrane by attaching to the vertical face and through the skirt onto the roof with standard roofing nails.

Fascia Cover

After approved flashing compatible with the roofing membrane is properly installed over the water dam, the fascia cover is set into place. 10' (3.05 m) sections should be installed with a 38" (12.7 mm) space between each section. Sections should be installed with the joints staggered with those of the Water Dam.

ANSI/SPRI ES-1 Certification applies on fascia heights of 8' (20.32 cm) or less. The TecLOC Fascia System is available in combinations of the following gauge and finish:

Aluminum

- Gauges: 0.040" (1.02 mm)
- Finish: Mill, Kynar® 500

Galvanized

- Gauges: 22 gauge (0.76 mm)
24 gauge (0.61 mm)
- Finish: Kynar® 500

Fascia covers are made of 0.040" (1.02 mm) aluminum mill finish, clear anodized, Kynar® 500 or 24 gauge (0.71 mm) galvanized Kynar® 500 finish. Concealed Splice Plates of the same color and material as the Fascia are installed behind each joint of the Fascia. These simply slide into place. 28 standard Kynar® 500 colors are available.

Approvals/Certifications

Performance Test

ANSI/SPRI ES-1 Test RE-2 (Pull-off Test for Edge Flashings)
Complies with International Building Code

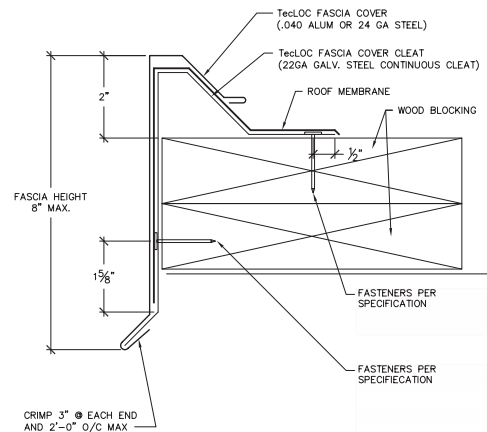
Results: Sustained Test Pressure (without failure) = 200psf, Exceeds Industry Standards.

Sustained Test Pressure (Without Failure) = 200 psf



**ANSI/SPRI ES-1
Tested Product**

Sustained Test Pressure (without failure) = 200psf



Accessories

Extender plates, inside and outside corners, fascia sumps, and scuppers are available made of the same material and color as the cover plate.

Advantages

- Uniquely engineered for simplified installation featuring a fast snap-on design
- ES-1 rating, exceeds testing criteria ensuring superior performance
- 28 Standard Kynar® 500 colors available and special colors available upon request
- Aesthetically appealing design
- Compatible with EPDM and PVC single ply systems and bituminous systems
- 35 year finish warranty

Refer to the Material Safety Data Sheet and product label prior to using this product.

DNA Matters...Designed for Performance

www.structuretecbpg.com • (855) 2USE BPG • (855) 287-3274

StructureTec Group - Solutions for the Built Environment